

Motors with V-belt drives can be mounted in different positions

Feeding equipment

Proportioning screw D

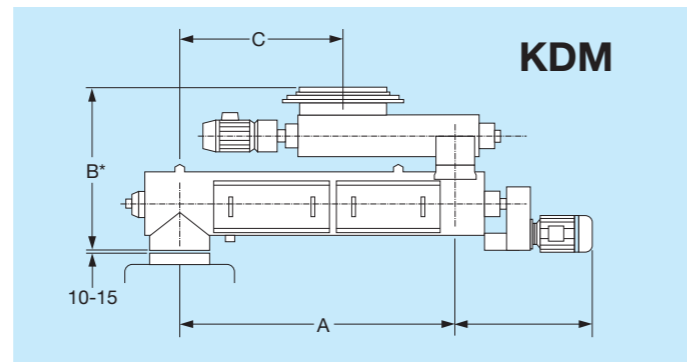
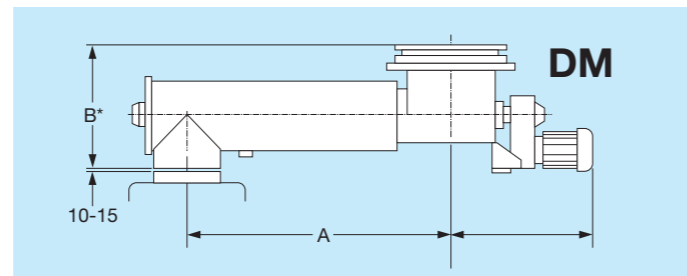
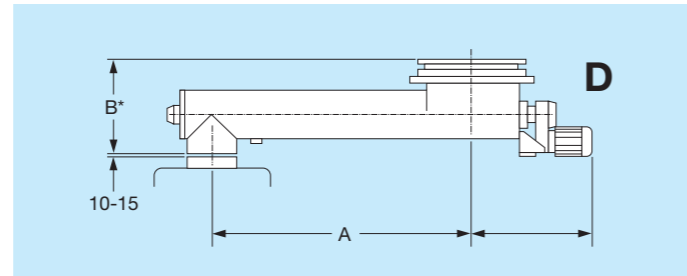
Size	160	250	315
A mm	1050	1800	1800
B mm	412	502	597

Proportioning and mixing screw DM

Size	160	315	400	500
A mm	1050	1800	1800	1800
B mm	412	597	702	707

Proportioning and mixing combination KDM

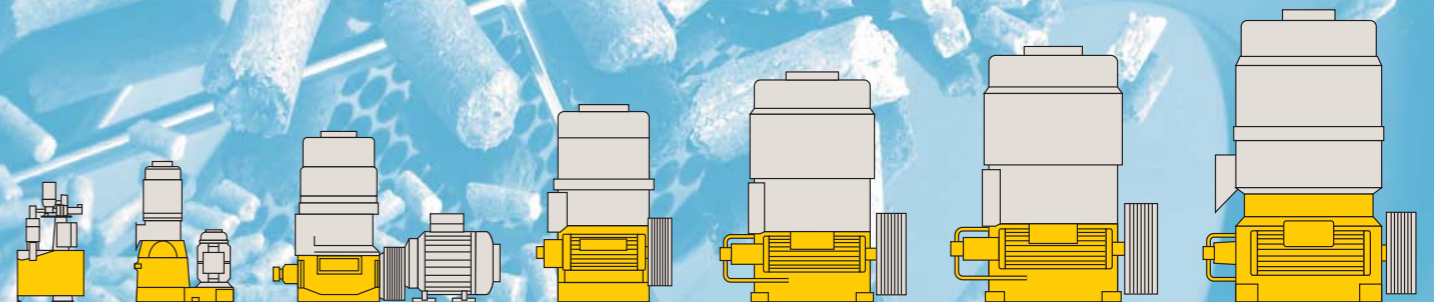
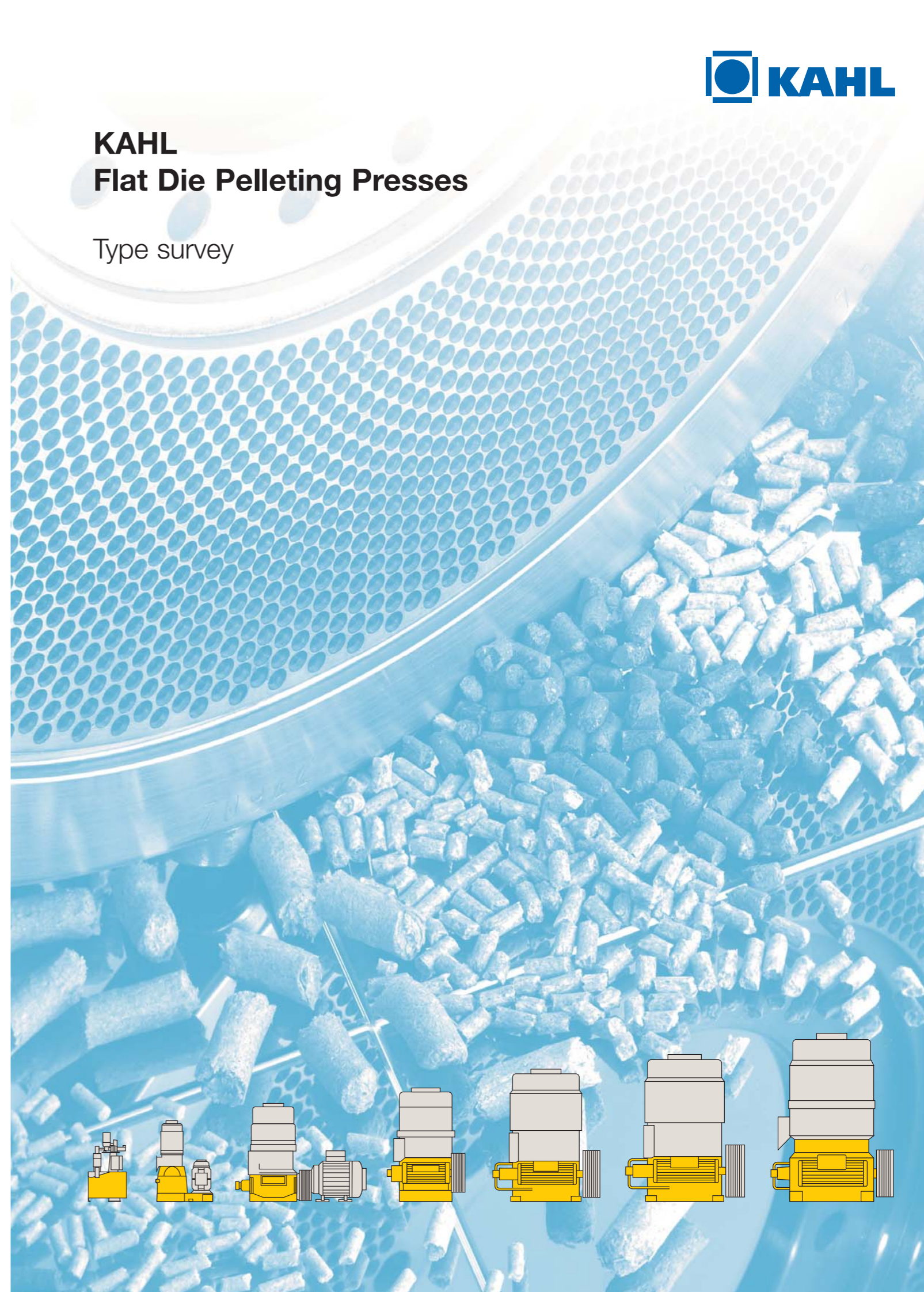
Size	160/ 315	250/ 315	250/ 400
A mm	1800	1800	1800
B mm	902	1026	1131
C mm	780	780	780



B* = without weld-on collar,
with weld-on collar + 50 mm

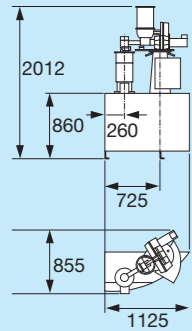
KAHL Flat Die Pelleting Presses

Type survey



Flat Die Pelleting Presses for various applications

14-175

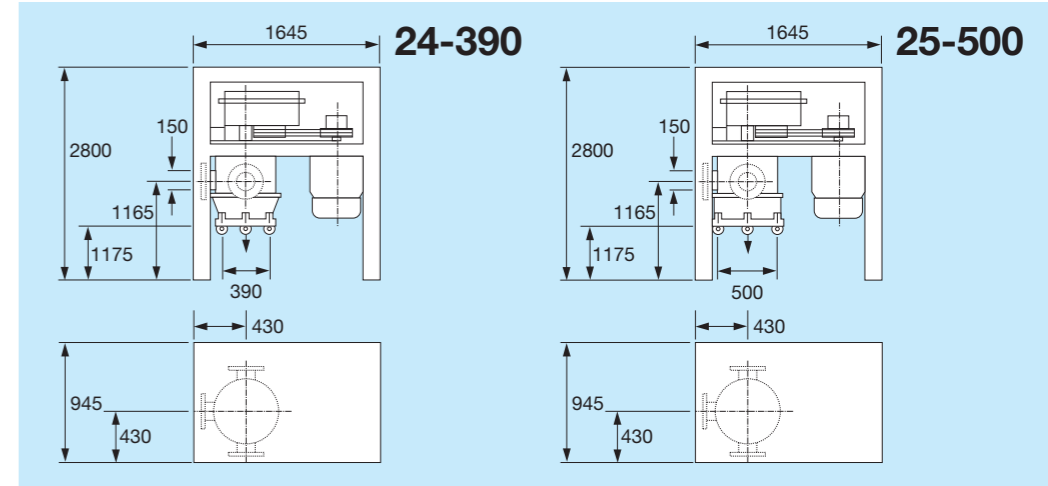


Pelleting presses for producing small quantities

Type	14-175
Die diameter mm	175
Roller diameter/width mm	130/29
Number of rollers	2
Drive motor kW/min ⁻¹	3
Roller speed m/s	0.5-0.8
Perforated die area cm ²	106
Machine weight kg with motor	260

Pelleting presses for processing pasty materials

Type	24-390	25-500
Die diameter mm	390	500
Roller diameter/width mm	230/77	230/77
Number of rollers	2	3
Drive motor kW/min ⁻¹	30	30
Roller speed m/s	1.65	1.72
Perforated die area cm ²	617	840
Machine weight kg with motor	1800	1950



Pelleting presses for producing medium and large quantities

Type	33-390	33-500	38-600	38-780	37-850	39-1000	45-1250	60-1250	60-1500
Die diameter mm	390	500	600	780	850	1000	1250	1250	1250
Roller diameter/width mm	230/77	230/77	280/102	280/102 or 350/102	350/132	350/156 or 450/156	450/192 or 450/156	450/192	450/242
Number of rollers	2	3	3-4	3-5 or 3-4	3-5	3-5 or 3-4	4-5	4-5	4-5
Drive motor kW/min ⁻¹	15-30/1500*	15-30/1500*	55-75/1500*	90-110/1500*	132/1500*	160-200/1500*	200-315/1500*	2 x 160-200/1500*	2 x 200-250/1500*
Roller speed m/s	2.2	2.4	2.6	2.6	2.5	2.6	2.7	2.6	2,67
Perforated die area cm ²	617	840	1382	1916	2695	3850	5900	5900	8769
Machine weight kg with motor	1150	1300	2250	3000	4600	5400	8000	9600	12800

The dimensions indicated refer to the biggest drive motor available.
Please see page 4 for possible installation and dimensions of feeding units.

*other speeds possible

